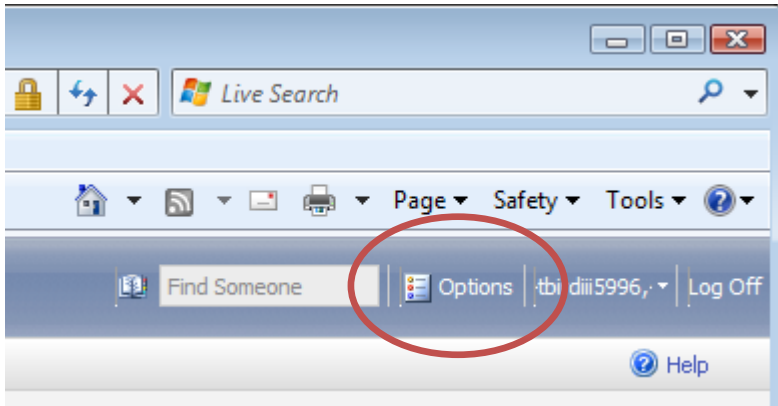


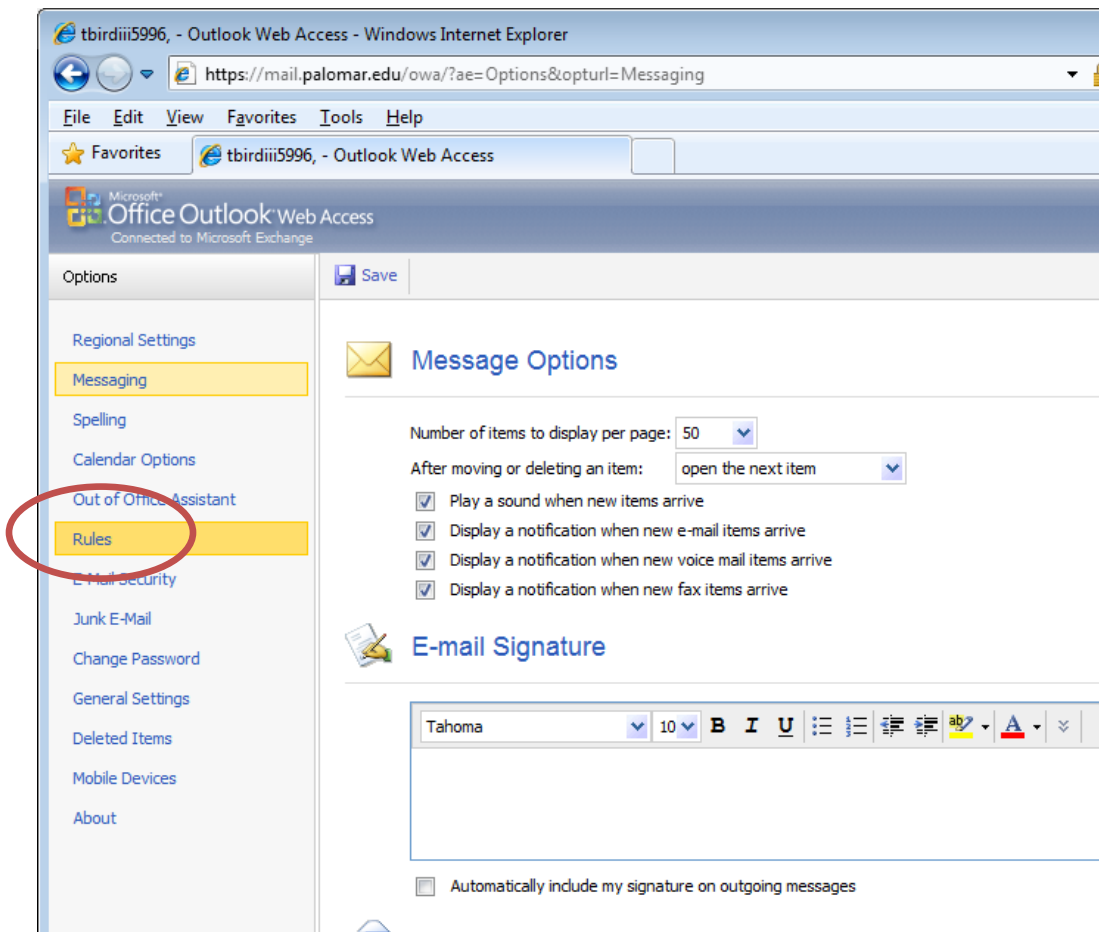
## Forwarding Palomar Email

Your Palomar Email can be forwarded to your personal email account using the following procedure. Note that the messages will also be available in your Palomar account. Only a copy is forwarded to your personal email.

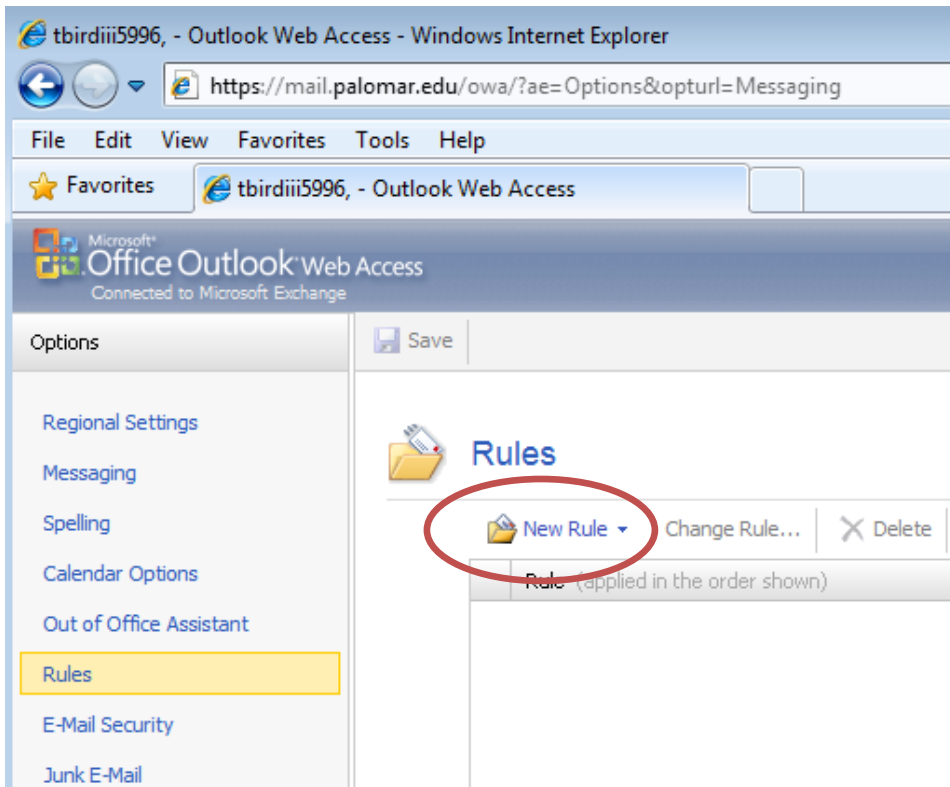
Log into your Palomar webmail account and click “Options”.



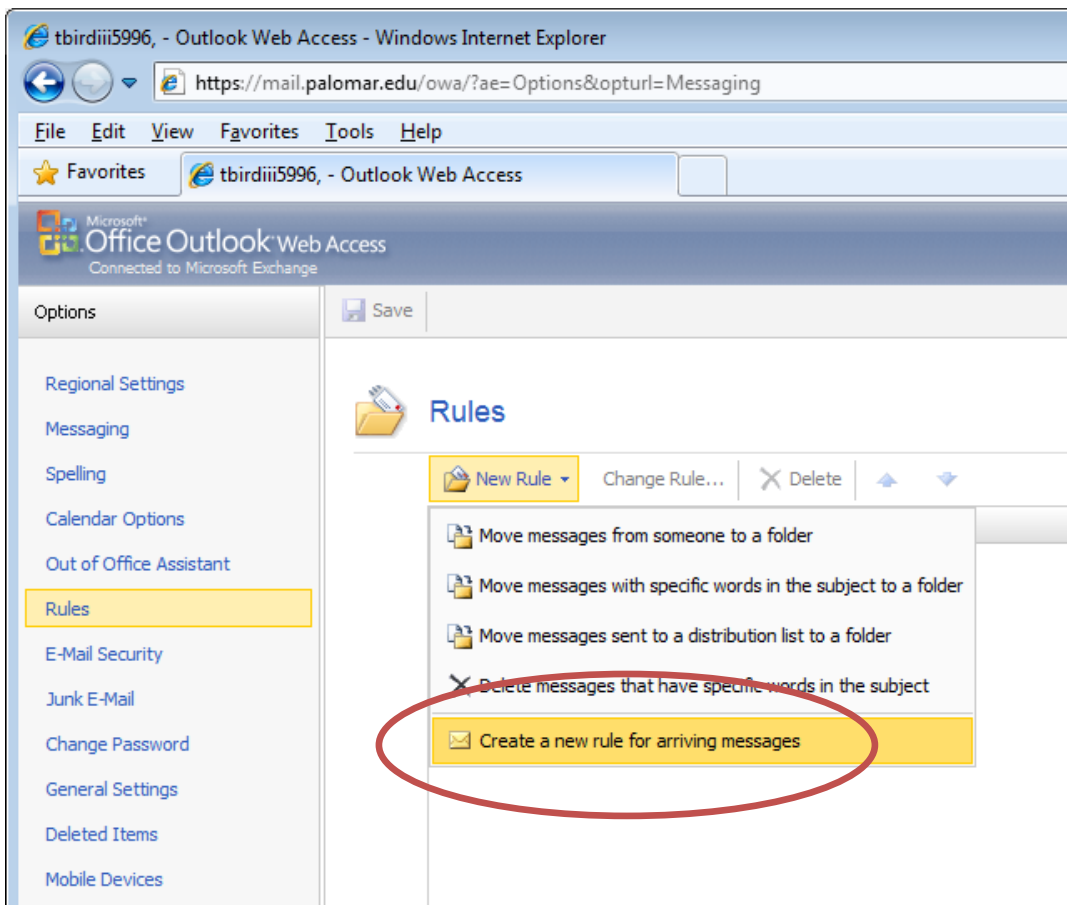
Then, click “Rules”.



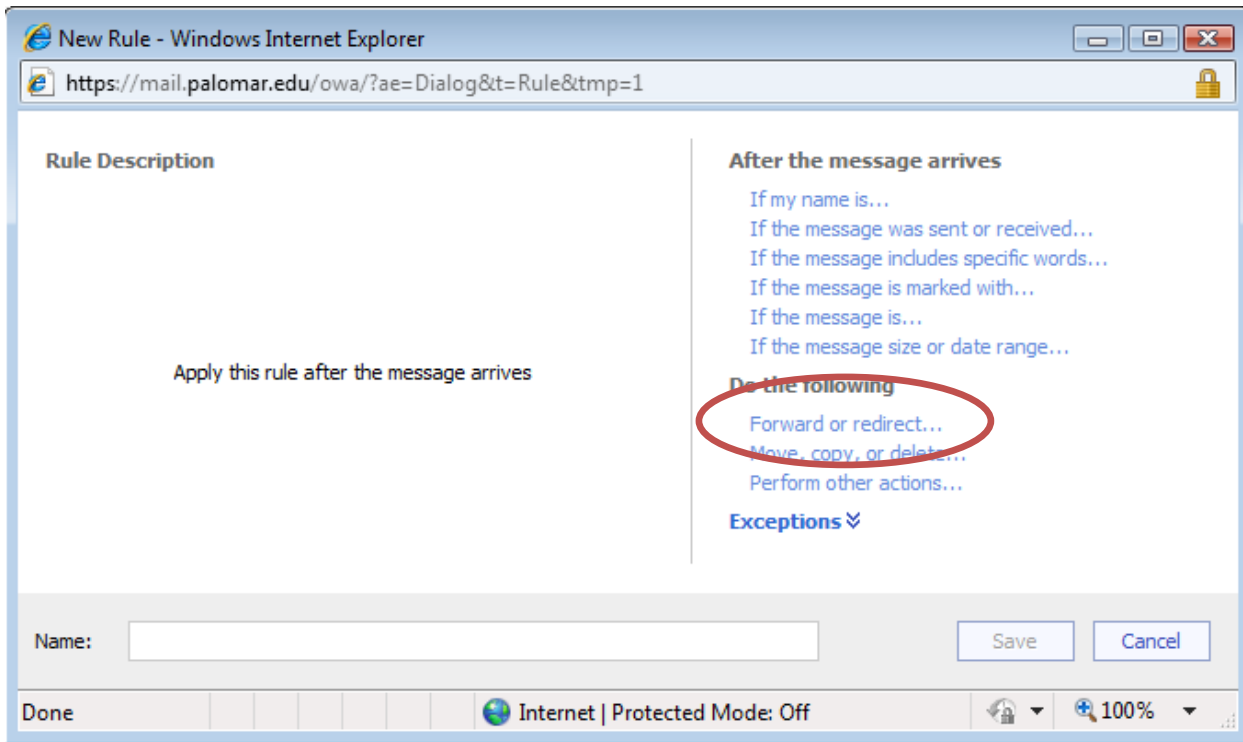
Click "New Rule".



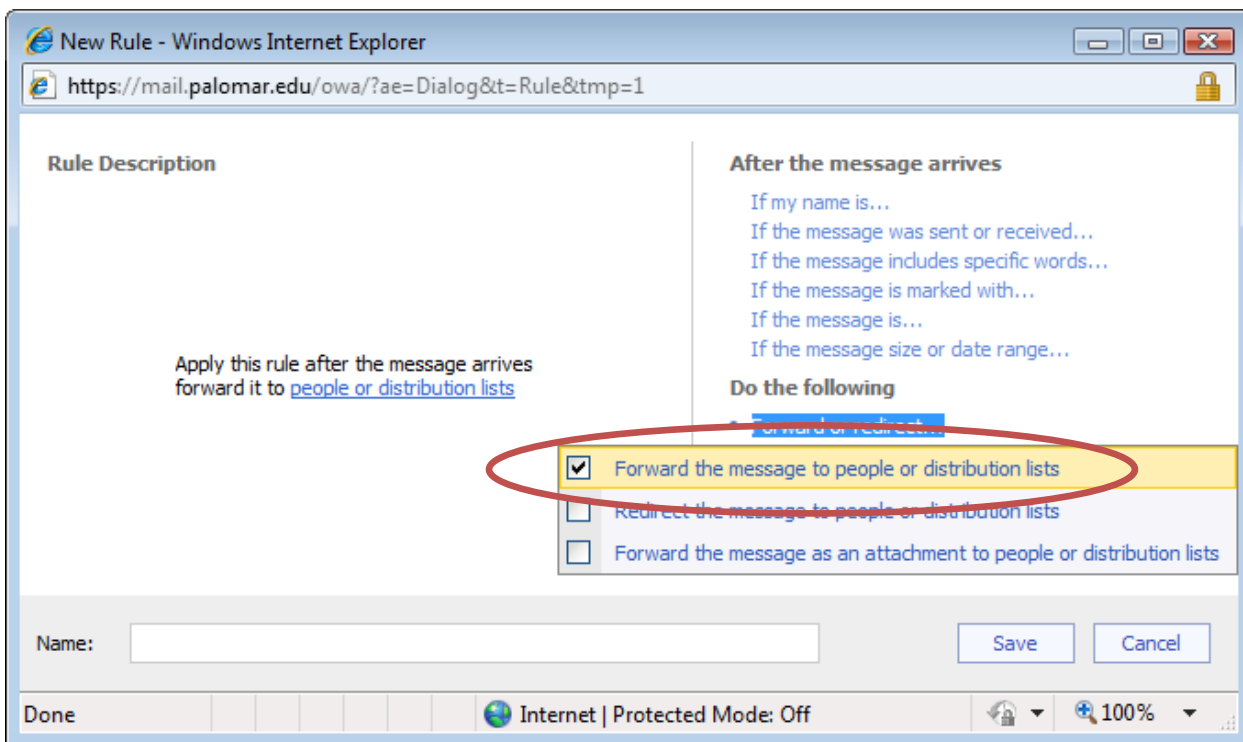
Click "Create a new rule for arriving messages".



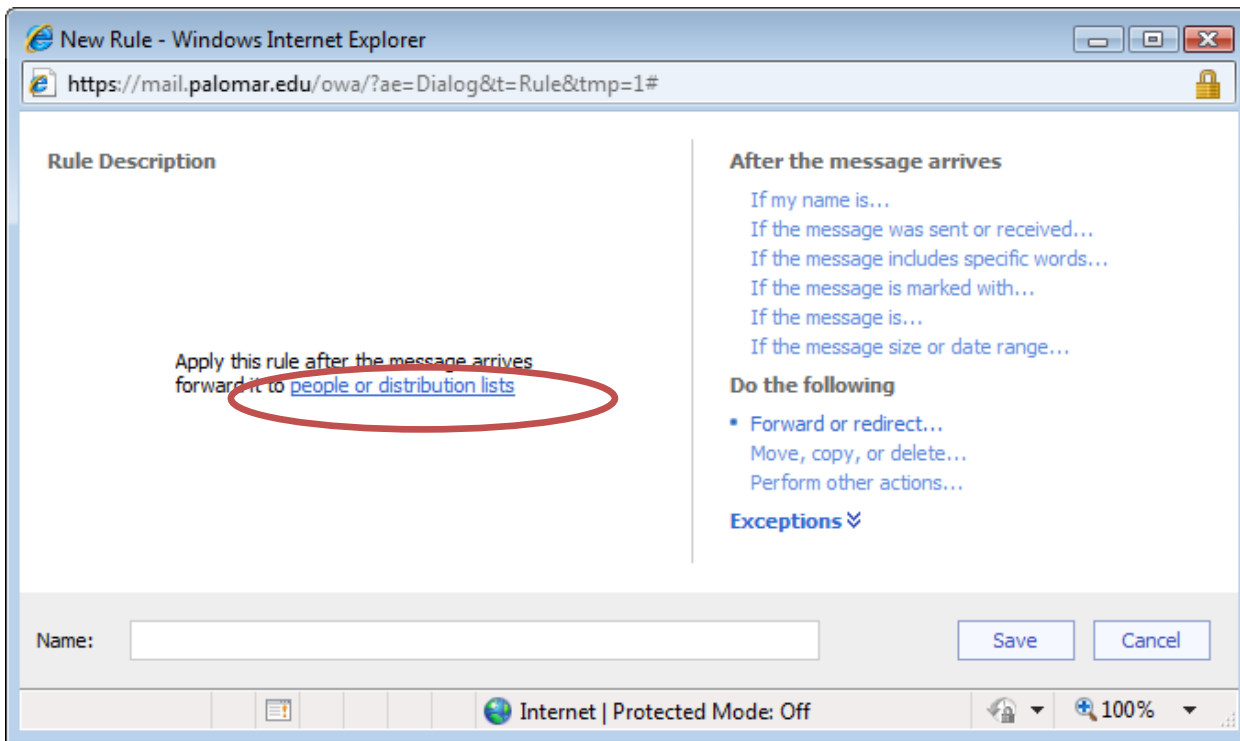
Click "Forward or redirect...".



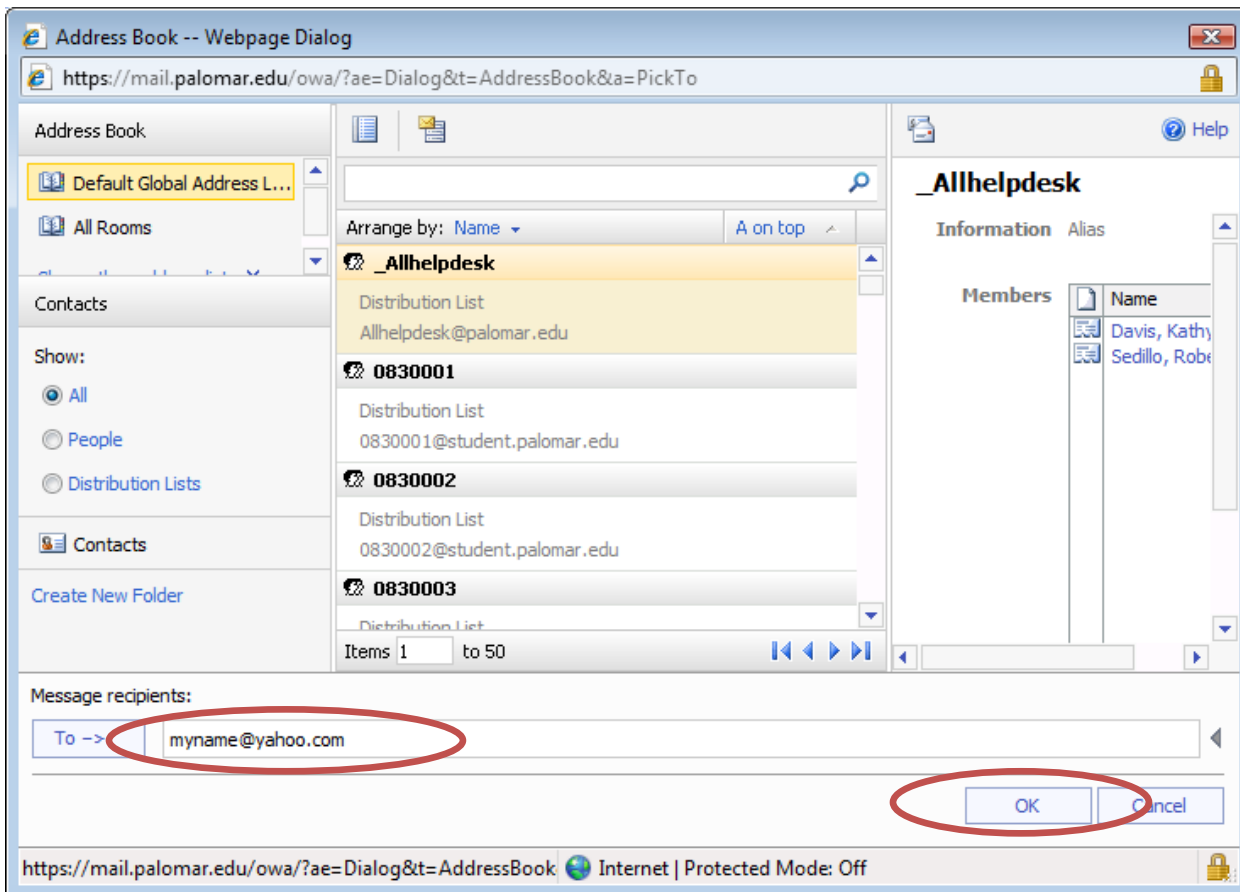
Checkmark "Forward the message to people or distribution lists".



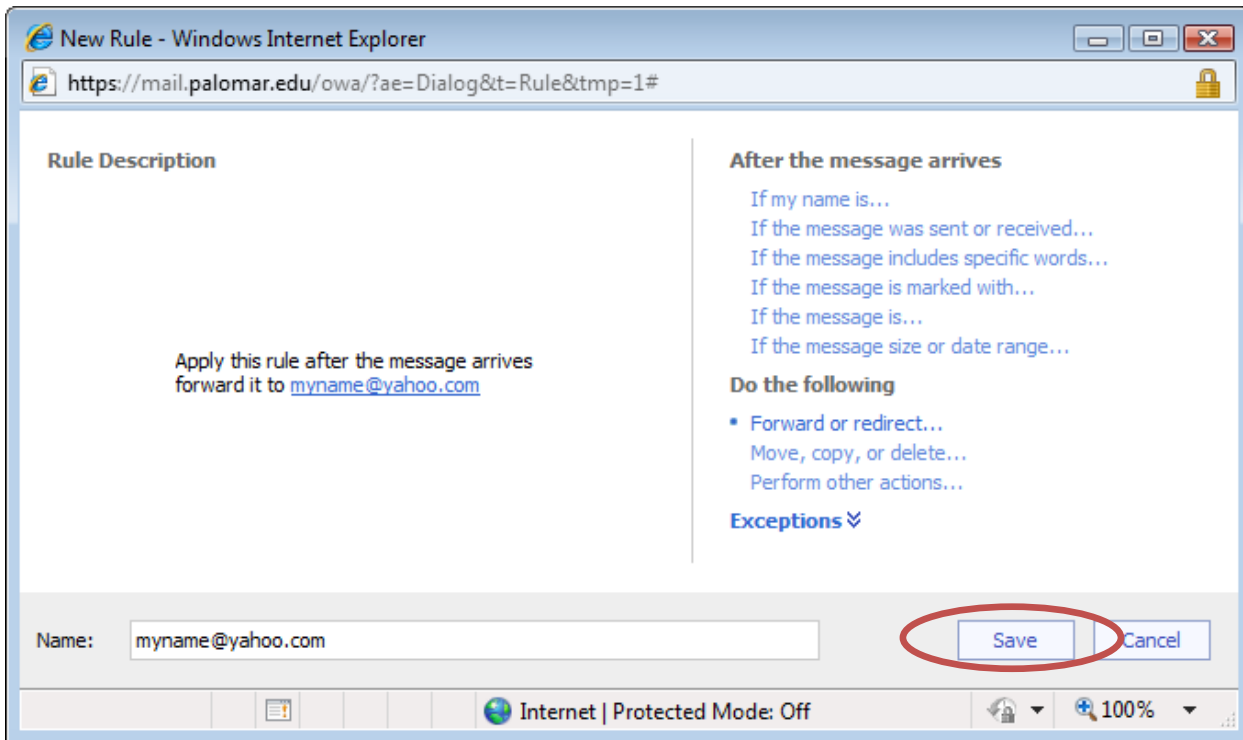
Click “people or distribution lists”.



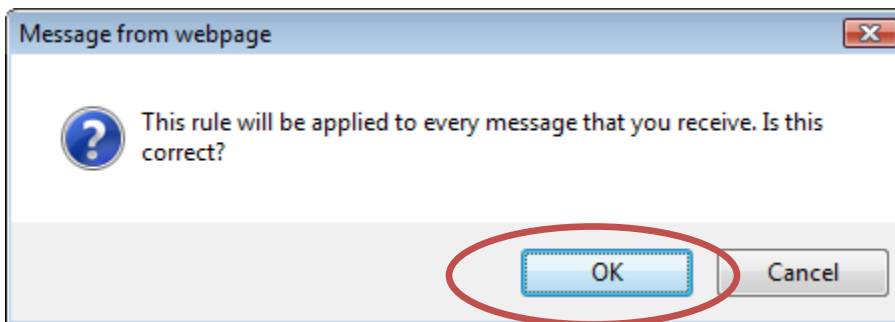
Type your personal email address and click OK.



Click SAVE.



Click OK.



That is it. You can go back to your Mailbox or Log Off.

